

31 WONINGEN

POLDERPAN

ZEEWOLDE



Opdrachtgever

Kalter Projectontwikkeling BV

Bouwjaar

2000-2001

Bouwsom

€ 1.678.986,- (excl. btw en honorarium)

Projectarchitect

Gert-Jan Hendriks

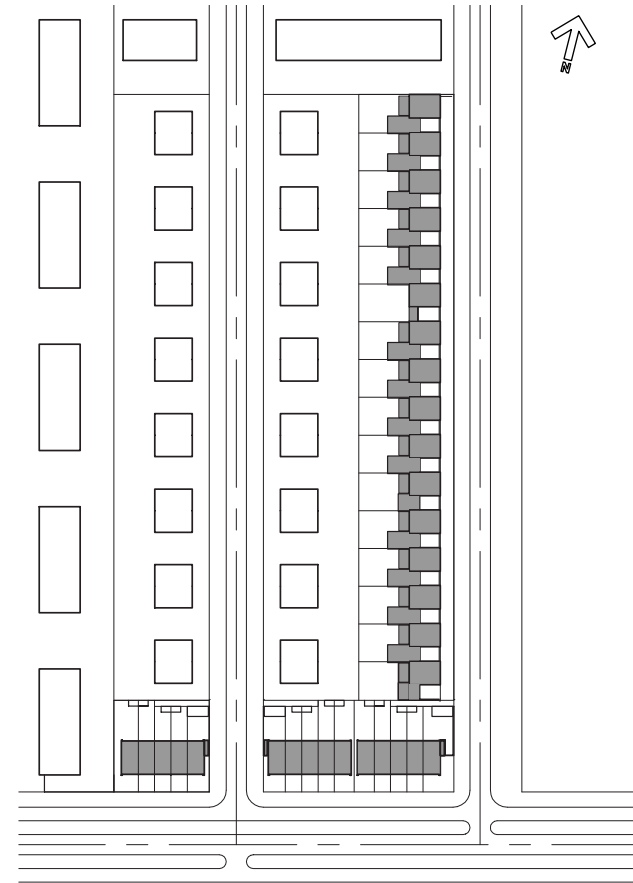
Medewerkers

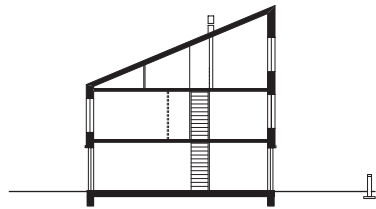
Gini Corso, Koen Heslenfeld, Dorieke van Steeg



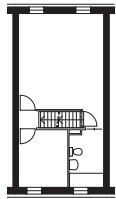
Zeewolde, dorp met rode dakpannen. Dakpannen op de lessenaarskappen. Lessenaarskappen voor optimale bezonning. Optimale bezonning is passieve zonne-energie. Twee onder één kap werd één onder één kap.

De auto in de patio en de uitbreidbaarheid in de tuin.

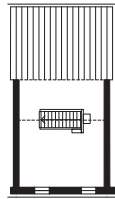




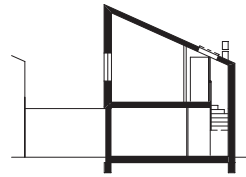
DOORSNEDE



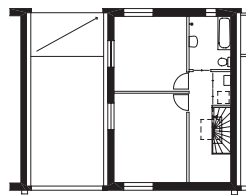
1e VERDIEPING



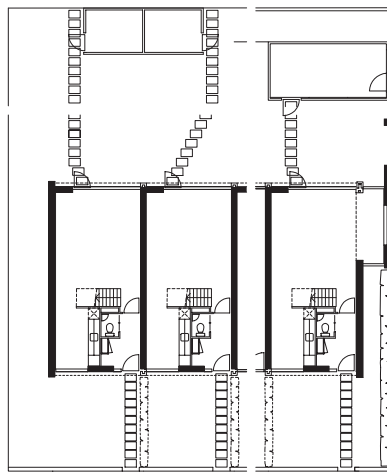
2e VERDIEPING



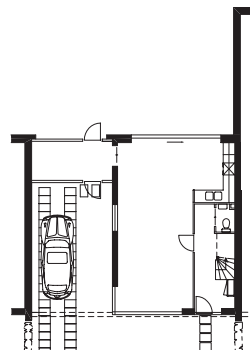
DOORSNEDE



1e VERDIEPING



BEGANE GROND
WONINGTYPE A



BEGANE GROND
WONINGTYPE B



